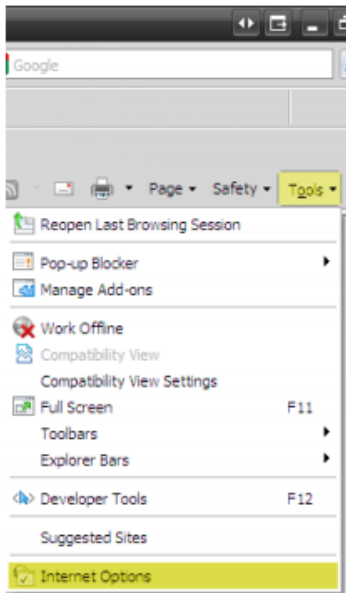


Modifying Internet Explorer Cookie Settings

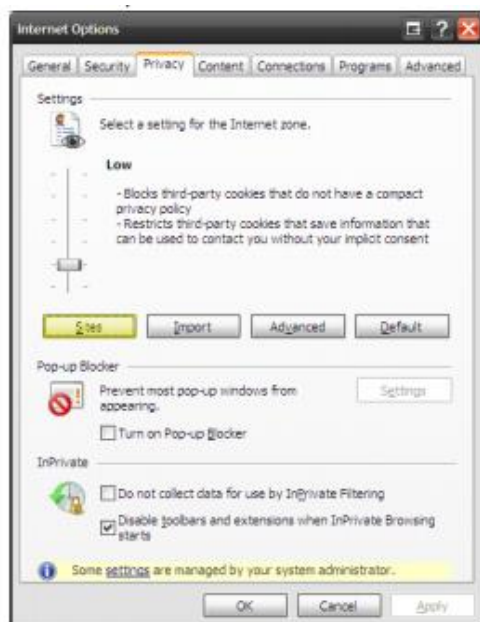
Please follow the steps below to ensure your Internet Explorer browser is configured properly so that it is able to accept BMI Federal Credit Union cookies.

Open an Internet Explorer session and click the '**Tools**' menu, and then select '**Internet Options**'.



Click the '**Privacy**' tab, and then move the slider to a position between the top and the bottom so you are not blocking or allowing all cookies.

Once you are finished, click the '**Sites**' button.



In the 'Address of website' section, type in <https://www.bmifcu.org/> into the field provided. Click 'Allow', and then click 'OK'.

Complete this process again and type https://online.bmifcu.org/BMIFederalCreditUnionOnline_35/Authentication/Login.aspx into the field to ensure BMI Federal Credit Union's Online Banking is accepted.

